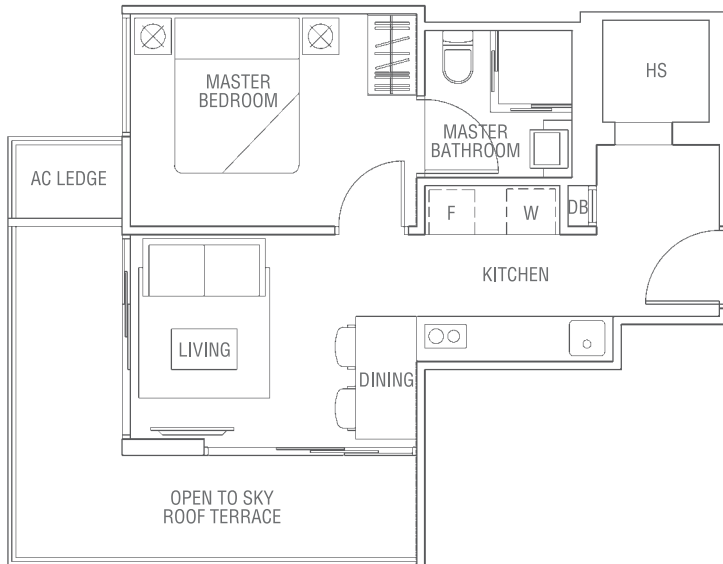


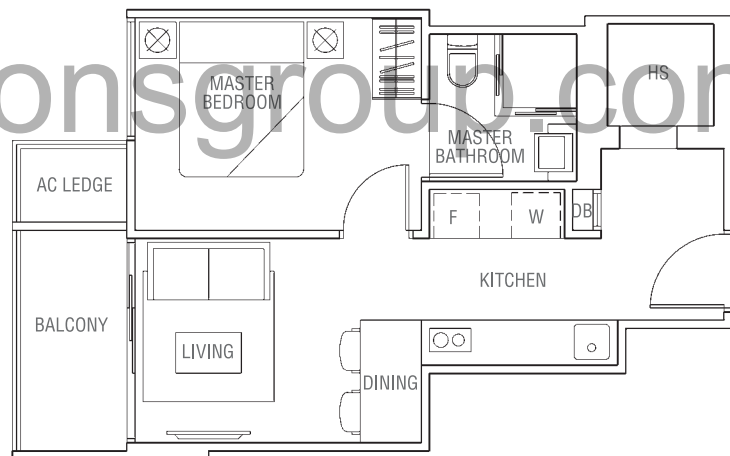
TYPE A1-P (1-bedroom)

Unit #08-07
 Area 47 sqm / 506 sqft
 (Inclusive of a/c ledge & open to sky roof terrace)



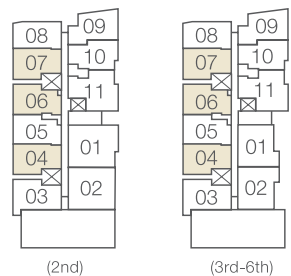
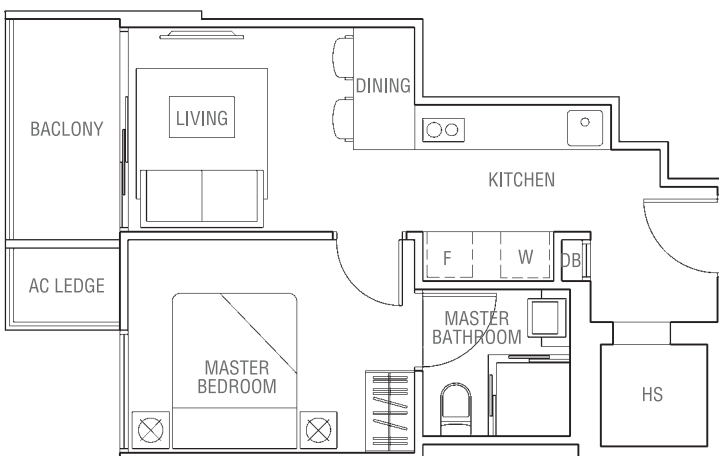
TYPE A1a (1-bedroom)

Unit #02-04, #03-04, #04-04, #05-04, #06-04
 #02-07, #03-07, #04-07, #05-07, #06-07 & #07-07
 Area 40 sqm / 431 sqft
 (Inclusive of a/c ledge & balcony)



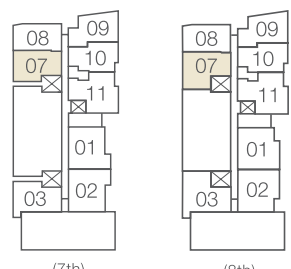
TYPE A1b (1-bedroom)

Unit #02-06, #03-06, #04-06, #05-06 & #06-06
 Area 39 sqm / 420 sqft
 (Inclusive of a/c ledge & balcony)



(2nd)

(3rd-6th)



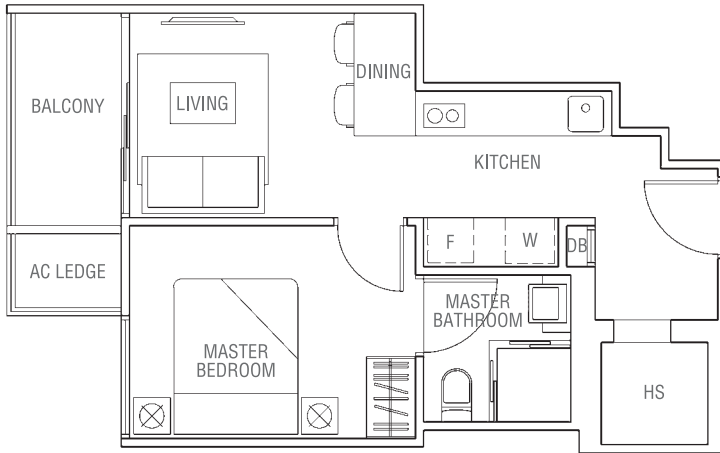
(7th)

(8th)



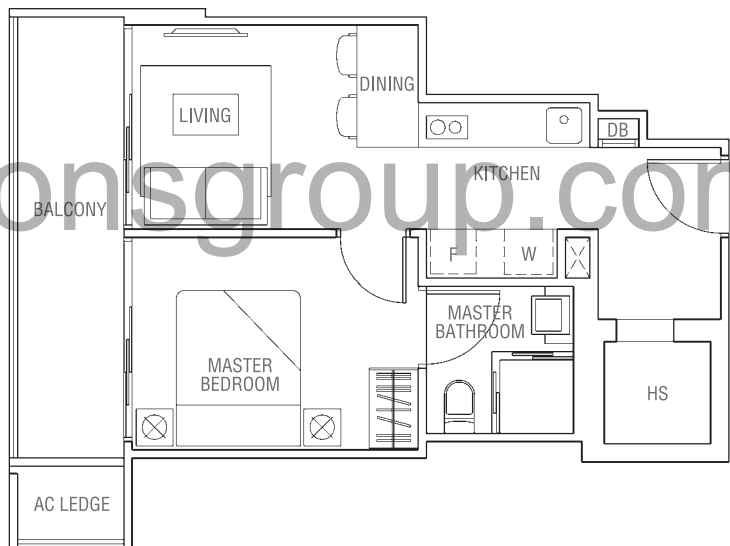
TYPE A1c (1-bedroom)

Unit #02-05, #03-05, #04-05, #05-05 & #06-05
 Area 40 sqm / 431 sqft
 (Inclusive of a/c ledge & balcony)



TYPE A2 (1-bedroom)

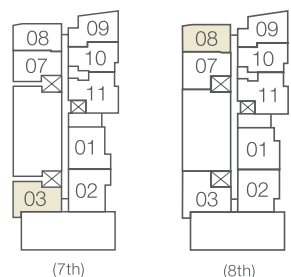
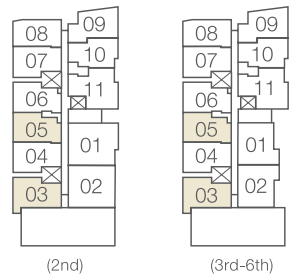
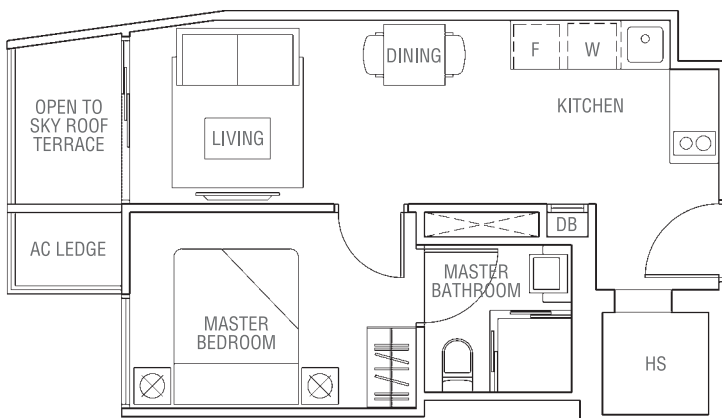
Unit #02-03, #03-03, #04-03, #05-03, #06-03 & #07-03
 Area 43 sqm / 463 sqft
 (Inclusive of a/c ledge & balcony)



www.huttonsgroup.com

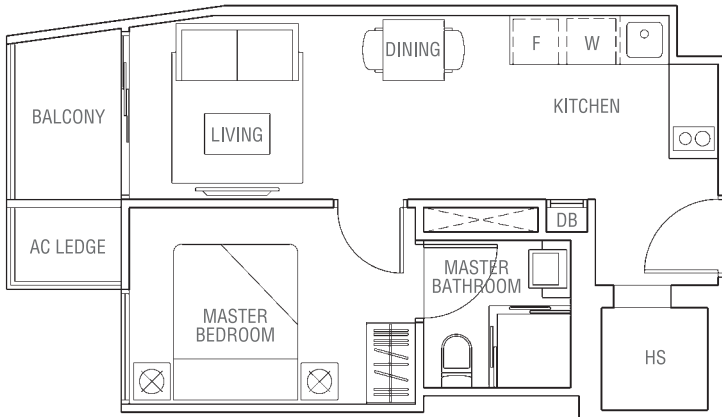
TYPE A3-P (1-bedroom)

Unit #08-08
 Area 39 sqm / 420 sqft
 (Inclusive of a/c ledge & open to sky roof terrace)



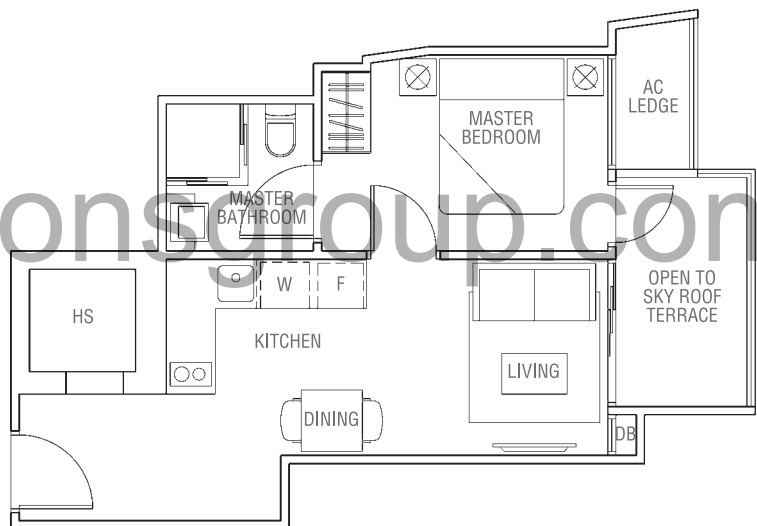
TYPE A3 (1-bedroom)

Unit #02-08, #03-08, #04-08, #05-08, #06-08 & #07-08
 Area 39 sqm / 420 sqft
 (Inclusive of a/c ledge & balcony)



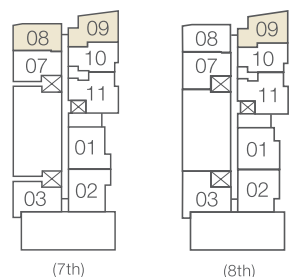
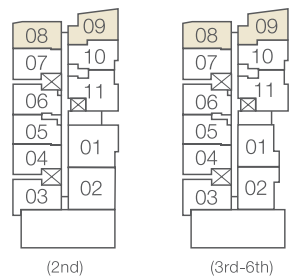
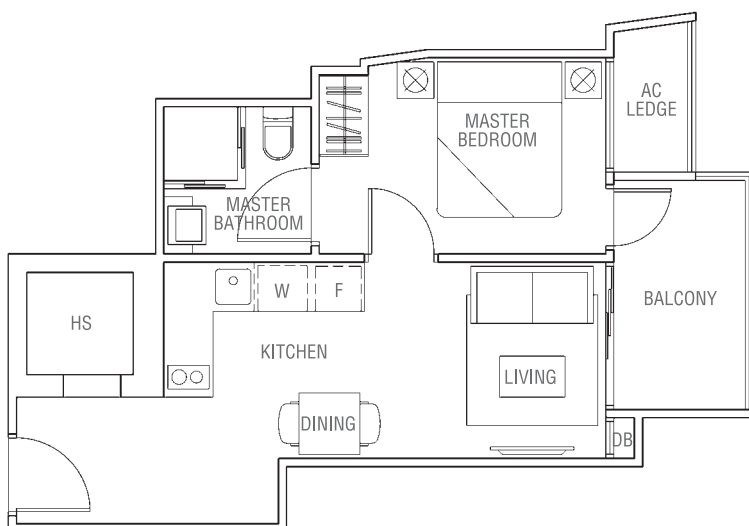
TYPE A4-P (1-bedroom)

Unit #08-09
 Area 41 sqm / 441 sqft
 (Inclusive of a/c ledge & open to sky roof terrace)



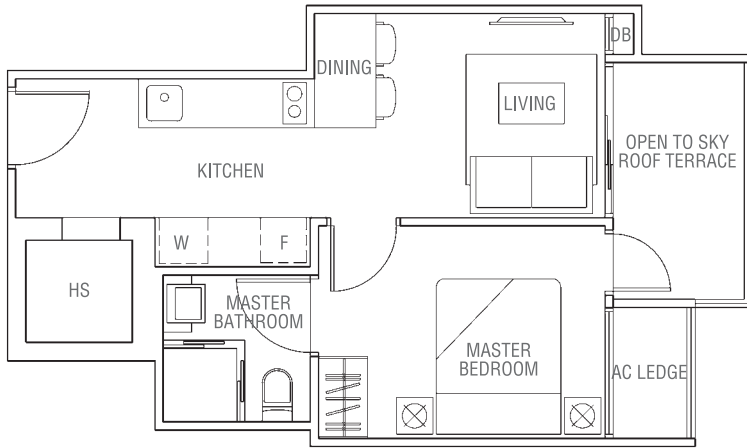
TYPE A4 (1-bedroom)

Unit #02-09, #03-09, #04-09, #05-09, #06-09 & #07-09
 Area 41 sqm / 441 sqft
 (Inclusive of a/c ledge & balcony)



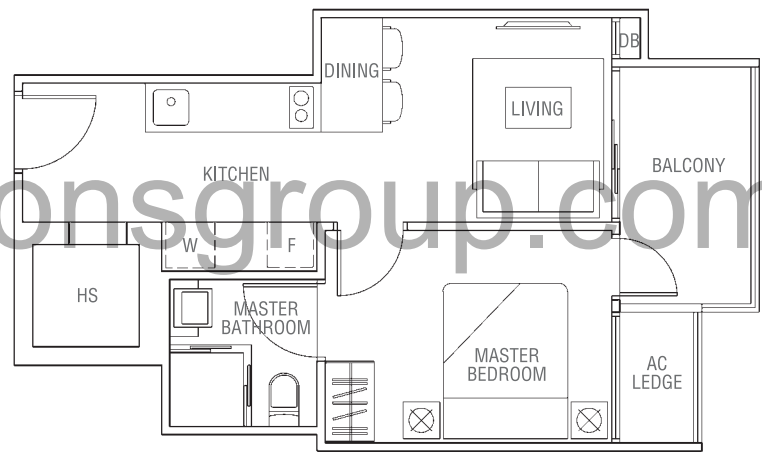
TYPE A5-P (1-bedroom)

Unit #08-10
 Area 41 sqm / 441 sqft
 (Inclusive of a/c ledge & open to sky roof terrace)



TYPE A5 (1-bedroom)

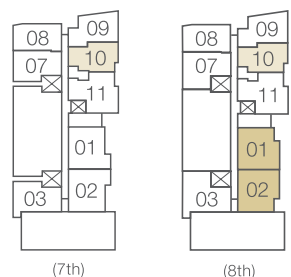
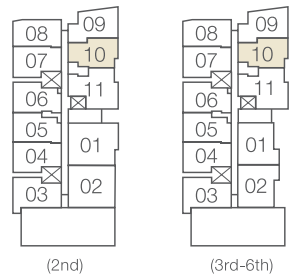
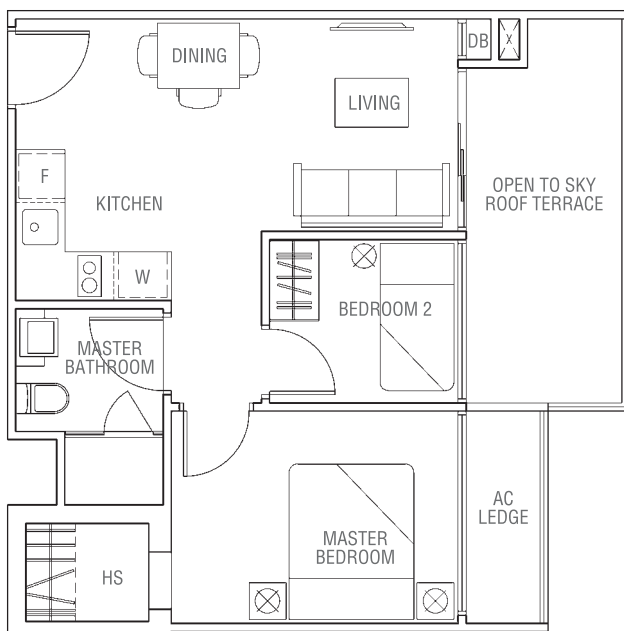
Unit #02-10, #03-10, #04-10, #05-10, #06-10 & #07-10
 Area 41 sqm / 441 sqft
 (Inclusive of a/c ledge & balcony)



www.huttonsgroup.com

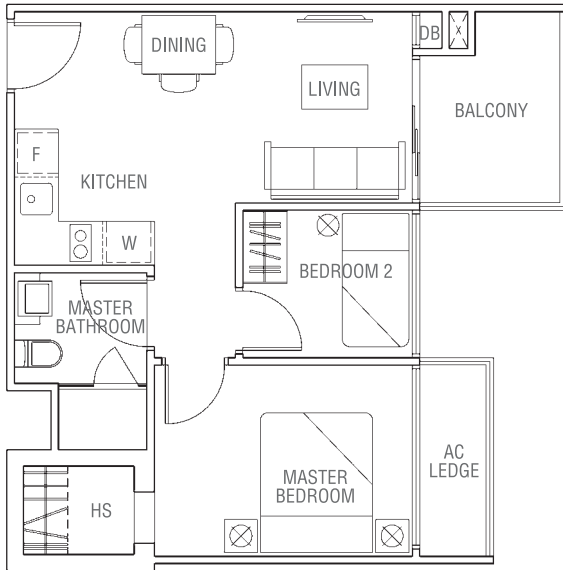
TYPE B1-P (2-bedroom)

Unit #08-01 & #08-02
 Area 54 sqm / 581 sqft
 (Inclusive of a/c ledge & open to sky roof terrace)



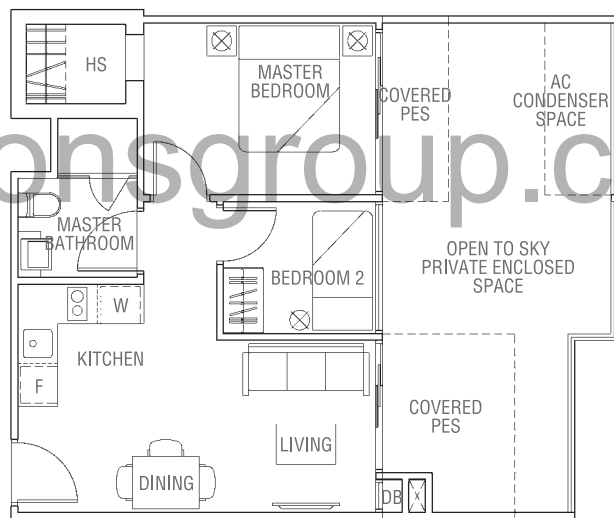
TYPE B1 (2-bedroom)

Unit #03-01, #04-01, #05-01, #06-01 & #07-01
 #03-02, #04-02, #05-02, #06-02 & #07-02
 Area 50 sqm / 538 sqft
 (Inclusive of a/c ledge & balcony)



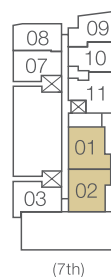
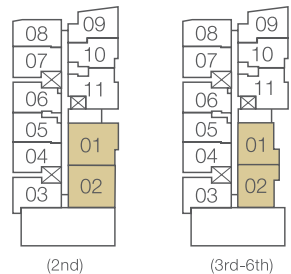
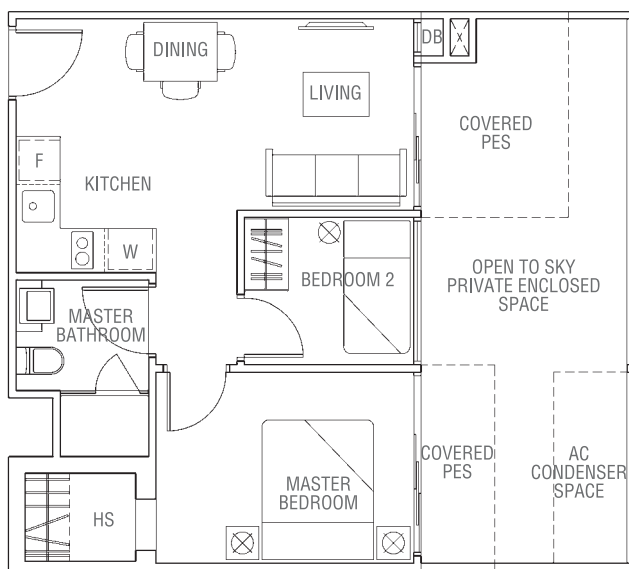
TYPE B1a-G (2-bedroom)

Unit #02-01
 Area 66 sqm / 710 sqft
 (Inclusive of a/c ledge, covered PES & open to sky private enclosed space)



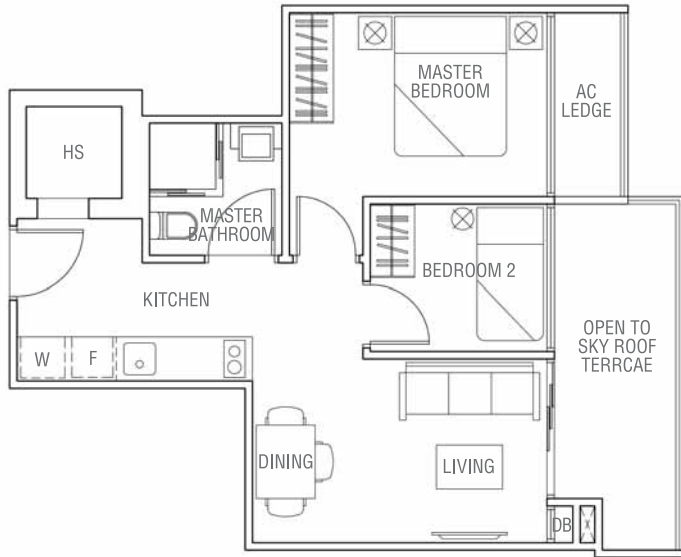
TYPE B1b-G (2-bedroom)

Unit #02-02
 Area 64 sqm / 689 sqft
 (Inclusive of a/c ledge, covered PES & open to sky private enclosed space)



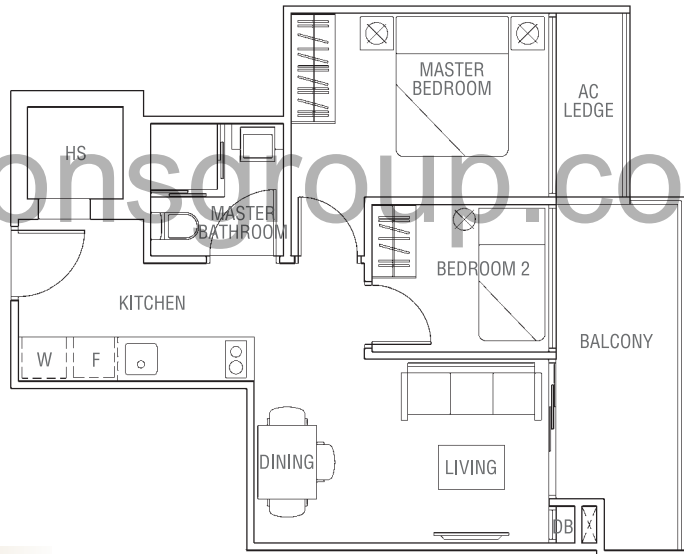
TYPE B2-P (2-bedroom)

Unit #08-11
 Area 53 sqm / 570 sqft
 (Inclusive of a/c ledge & open to sky roof terrace)



TYPE B2 (2-bedroom)

Unit #02-11, #03-11, #04-11, #05-11, #06-11 & #07-11
 Area 53 sqm / 570 sqft
 (Inclusive of a/c ledge & balcony)



TYPE B3-P (2-bedroom)

Unit #08-03
 Area 55 sqm / 592 sqft
 (Inclusive of a/c ledge & open to sky roof terrace)

